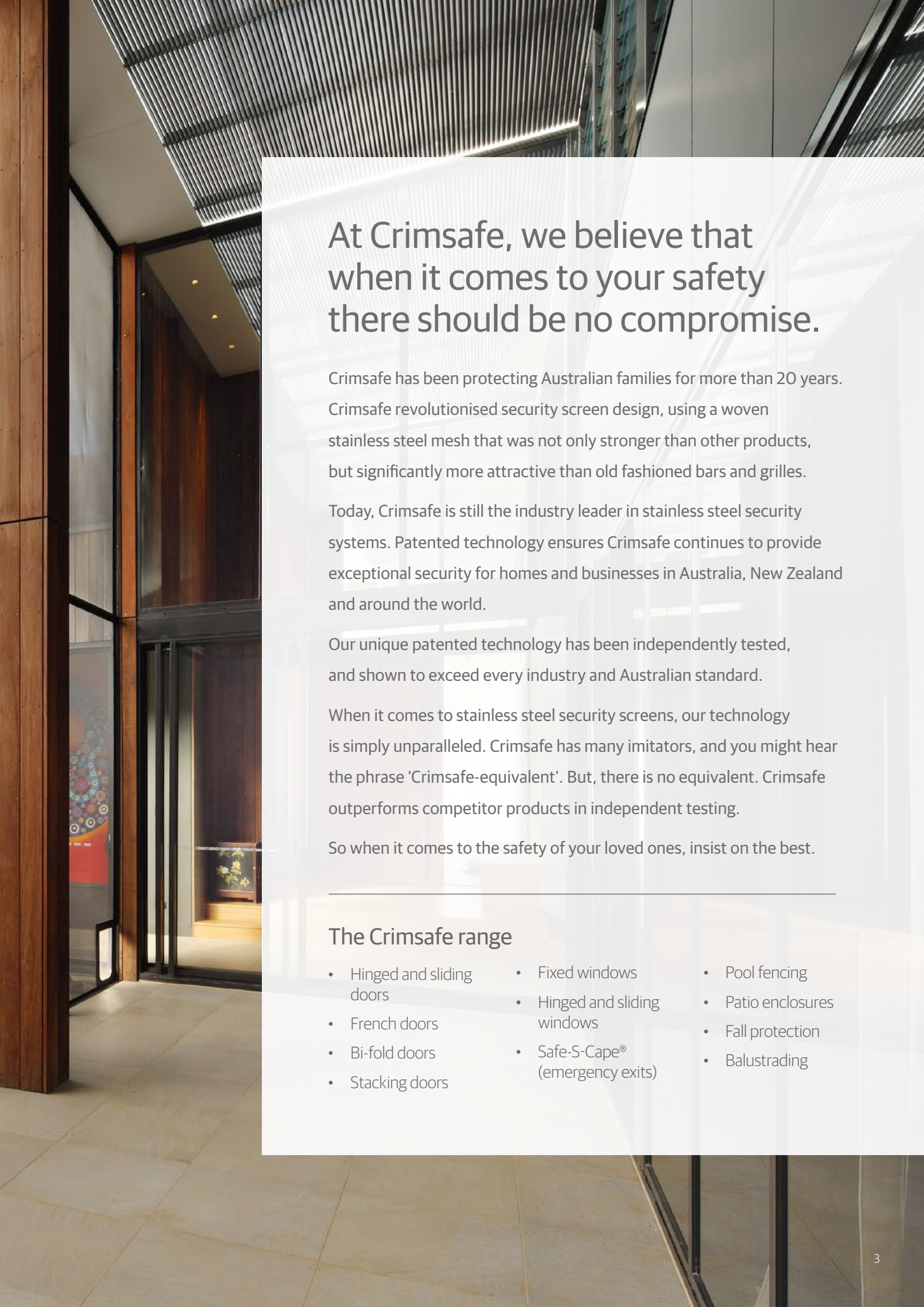




Always insist on Crimsafe





A photograph of a modern building's interior. On the left, there is a large glass door or window with a black frame. A stainless steel security screen is visible, partially covering the glass. The ceiling is made of a grid of stainless steel slats. The floor is made of light-colored tiles. The overall atmosphere is clean and modern.

At Crimsafe, we believe that when it comes to your safety there should be no compromise.

Crimsafe has been protecting Australian families for more than 20 years. Crimsafe revolutionised security screen design, using a woven stainless steel mesh that was not only stronger than other products, but significantly more attractive than old fashioned bars and grilles.

Today, Crimsafe is still the industry leader in stainless steel security systems. Patented technology ensures Crimsafe continues to provide exceptional security for homes and businesses in Australia, New Zealand and around the world.

Our unique patented technology has been independently tested, and shown to exceed every industry and Australian standard.

When it comes to stainless steel security screens, our technology is simply unparalleled. Crimsafe has many imitators, and you might hear the phrase 'Crimsafe-equivalent'. But, there is no equivalent. Crimsafe outperforms competitor products in independent testing.

So when it comes to the safety of your loved ones, insist on the best.

The Crimsafe range

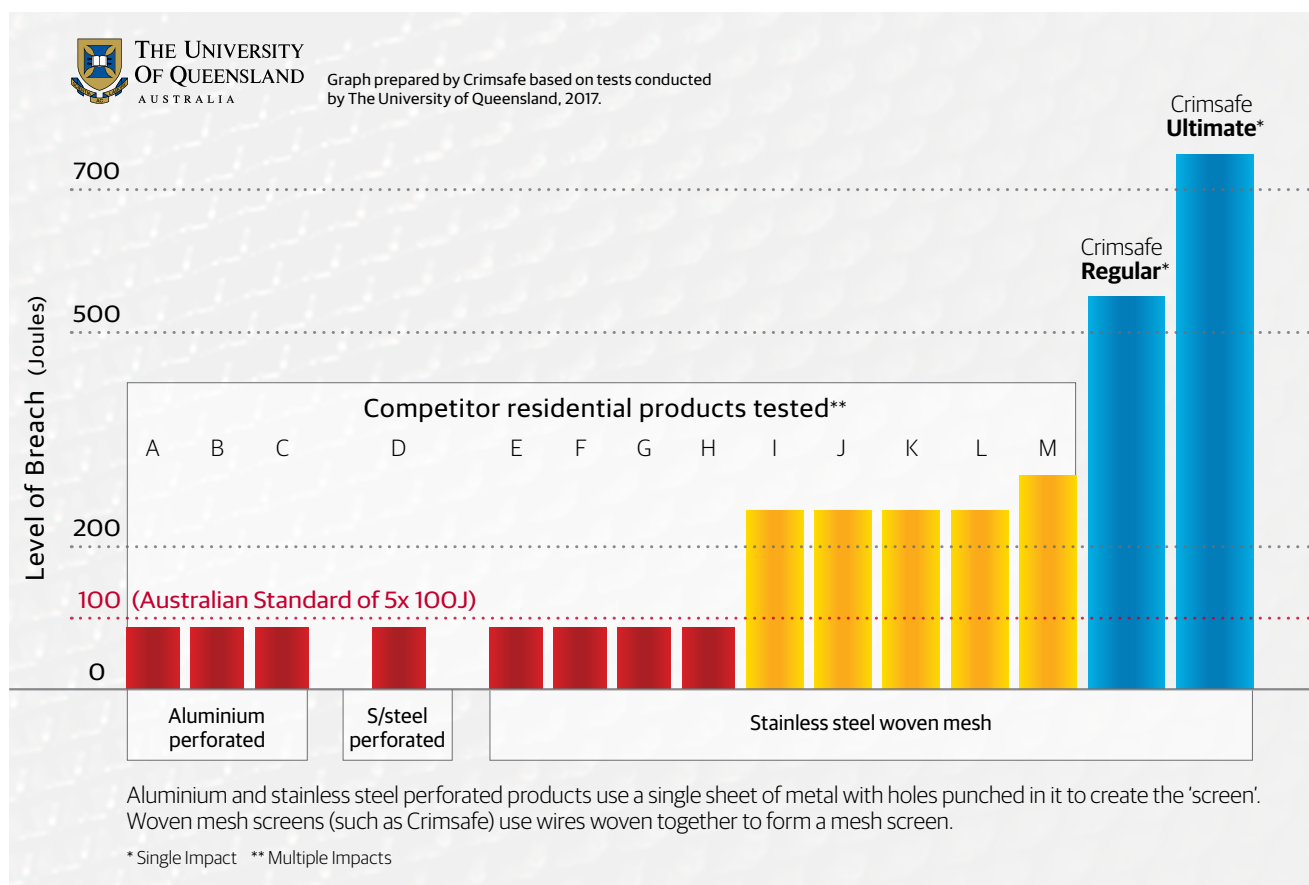
- Hinged and sliding doors
- French doors
- Bi-fold doors
- Stacking doors
- Fixed windows
- Hinged and sliding windows
- Safe-S-Cape® (emergency exits)
- Pool fencing
- Patio enclosures
- Fall protection
- Balustrading

Why choose Crimsafe

Crimsafe is the strongest stainless steel security screen system on the market. That's no empty boast – we have the results to prove it. Standards Australia assisted the security screen industry in developing the standards used to test security screens. At Crimsafe, we don't just meet the Australian Standards, we exceed them.

Superior strength against impact

When it comes to impact resistance, Crimsafe has an outstanding reputation that's backed up by independent testing. When tested by The University of Queensland, our screens stood up not just against an Australian Standard of 5 x 100 Joule (J) impact, but also against singular impact levels up to 550J (Crimsafe Regular) and 750J (Crimsafe Ultimate).



The Australian Standard



Dynamic impact testing on security doors requires them to withstand an impact of 100 Joules of energy, five times. To put this in perspective, that's about the same as a 10-year-old child running into a door. Many security screens are designed to simply meet this minimum requirement.



Crimsafe Performance

The average adult male weighing 86kg can easily exert more than 100 Joules of energy in a single impact, multiple times. That's why Crimsafe has been developed to exceed the Australian Standard. Crimsafe Ultimate screens are designed to withstand more than seven times the impact level required by Australian Standards.

[†]Approximate equivalent to 45kg weight used for Australian Standard Dynamic Impact Test. ^{*}Average weight of Australian adult male. Australian Bureau of Statistics, 2012.

Tried and tested again and again



Impact and leverage

Crimsafe easily exceeds the Australian Standards required. The design and strength of Crimsafe security screens will protect your family and help keep intruders out. Crimsafe products are tested against dynamic impact and tool attacks. These tests simulate the force of a kick, punch or charge, as well as against screwdrivers and other tools used to leverage apart frames, locks and hinges.



Energy efficient

Crimsafe reduces solar heat gain by up to 53%. When Crimsafe security screens are applied over a window, the cooling efficiency of the window increases to a 3 Star WERS rating, with a reduction in solar heat gain of up to 53%. In the cooler months the heating rating increases to a 1.5 Star WERS rating. Crimsafe's Tensile-Tuff® security mesh also blocks 62% of harmful UV rays from entering your home.



Fall prevention

Crimsafe's strength and durability keeps your family safe by preventing falls from windows and balconies. Crimsafe screens meet building construction requirements for child protection of openable windows, providing safety without compromising the look of the window.



Fire resistance

Crimsafe screens provide protection from ember attack, reduce radiant heat and will protect glass from the impact of burning debris. When tested, Crimsafe screens achieved a fire attenuation rating of 59%, meaning that 59% of radiant heat on one side of a Crimsafe screen does not transfer through the screen. Crimsafe security screens can be used for the highest level in bushfire protection (BAL-FZ).



Cyclone and storm protection

Crimsafe protects your home against violent, debris-carrying winds of cyclones and severe storms. Crimsafe security screens passed cyclone debris tests, meeting the 36 m/s requirement, which means they are approved for use in Cyclone regions C and D. Our specialist Cyclone Debris Screens pass the highest levels for cyclone debris screening in regions C and D, withstanding impact up to 44 m/s.



Corrosion resistance

Crimsafe security screens are designed to last, even when exposed to the elements. All Crimsafe products can withstand 3,000 hours in a Prohesion Accelerated cyclic test. Alternating salt spray and dry cycles, the test simulates the equivalent to 30 years of environmental exposure.



Insect protection

Crimsafe security screens keep pests and insects out of your home, without sacrificing airflow. Crimsafe's Tensile-Tuff® security mesh has been tested for its ability to keep mosquitoes out. Over 72 hours, the mesh prevented 99% of mosquitoes from passing through.

Crimsafe outperforms the rest

Our unique patented technology is unmatched in the industry. This, along with our made-to-measure approach, is the reason Crimsafe outperforms the competition for strength testing.



What makes Crimsafe so strong?

1. Thicker, stronger mesh

Crimsafe's Tensile Tuff® mesh uses 0.9mm,* 304 grade stainless steel. This means the mesh is heavier and has up to 26% more material than most other mesh products on the market that use 0.8mm wire, making it harder to cut or penetrate.

2. Unique fastening system

Crimsafe uses exclusive Screw-Clamp™ technology, which bites down on the mesh in a vice-like grip, holding it into the frame. This allows Crimsafe to withstand tremendous force by absorbing and dispersing impact, strongly resisting being pulled out of the frame.

3. Clip-on protective cover

Crimsafe Ultimate is the new generation of Crimsafe, incorporating patented assembly technology. Its snap-on cover and heavy-duty clamping system make Crimsafe Ultimate 40% stronger than our regular product. The smooth curved profile creates a streamlined look to complement any architectural style.

One screen, many benefits

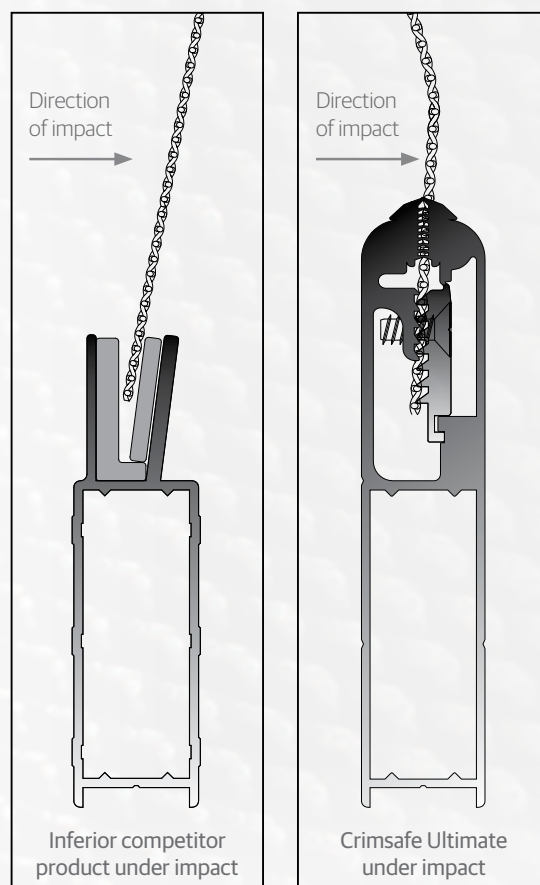
- Super strong security
- Insect protection
- UV protection
- Energy efficiency
- Emergency exits
- Corrosion resistant
- Fall protection from windows and balconies
- Fire protection
- Storm and cyclone protection

*The specifications pertaining to the mesh and other products that we supply are our target specifications. The actual specifications for items supplied may differ taking into account reasonable manufacturing tolerances.

There is no comparison

While other look-alikes claim strength and durability, Crimsafe Ultimate delivers real protection from the threat of an intruder breaking into your home. So what's the difference?

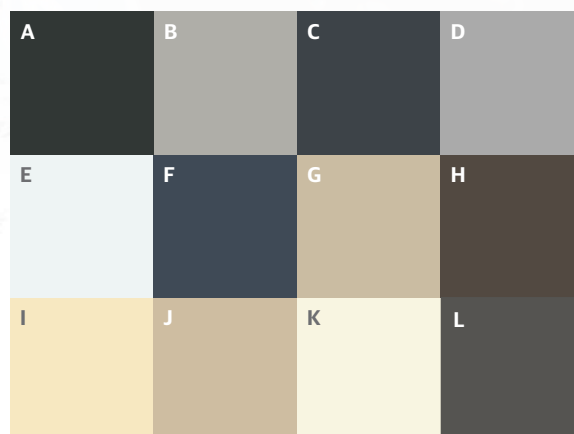
- Most look-alike screens have mesh that is held in by plastic or metal wedges. When kicked, the wedges give way and the mesh can pop out in seconds.
- Look-alike mesh that doesn't use 0.9mm Structural Grade 304 stainless steel is not as strong.
- Look-alike products cannot secure the mesh with the same strength as Crimsafe.



Crimsafe frames are powder-coated in a wide range of standard colours, and custom colours are available on request. Woodgrain and anodised finishes are also available.



A. Marble Black Satin



A. Marble Black Satin B. Anodic Natural Matt C. Anotec Dark Grey Matt D. Apo Grey Satin E. Classic Pearl White Gloss
F. Deep Ocean Satin G. Paperbark® Satin H. Hamersley Brown Satin I. Primrose Gloss, J. Stone Beige Matt
K. Whitebirch Gloss L. Woodland Grey Satin



A product for every need

Crimsafe has an ever-growing range of products designed to suit any home.

Custom made-to-measure, Crimsafe ensures a perfect fit, even for unusual sizes and out-of-square openings.

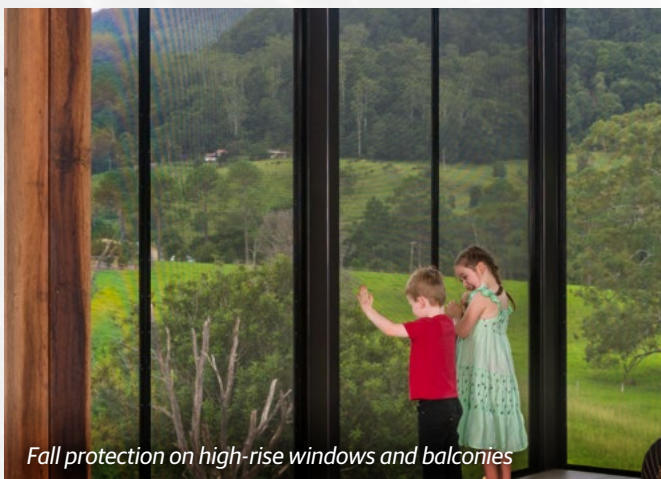
Flexible framing systems can be applied to fixed, hinged or sliding openings, as well as French, bi-fold and stacking doors.

Crimsafe's patented Safe-S-Cape® system provides a quick exit in case of emergency. A one-touch system that can be operated from the inside, without compromising security.

Crimsafe can even be used in balustrading, patio enclosures and pool fencing.

Whether your home is a contemporary or heritage design, a house or apartment, single storey or high-rise – Crimsafe screens provide maximum security, as well as a huge range of functional benefits like heat protection and UV resistance.

Crimsafe comes with a standard 10 Year Warranty or you can apply online for an Extended Warranty up to 15 years.



Fall protection on high-rise windows and balconies



Stacking doors



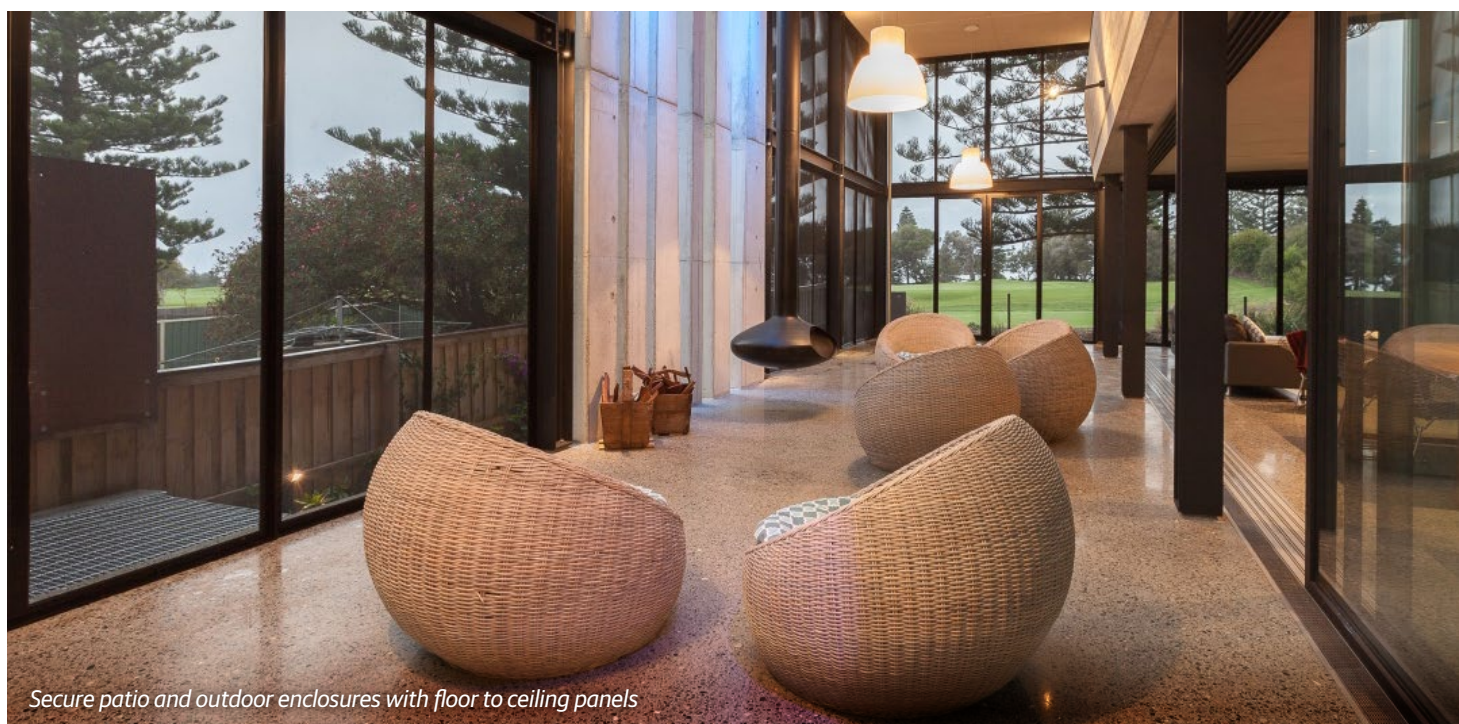
Double or triple sliding doors



Safe-S-Cape® windows for emergency exit



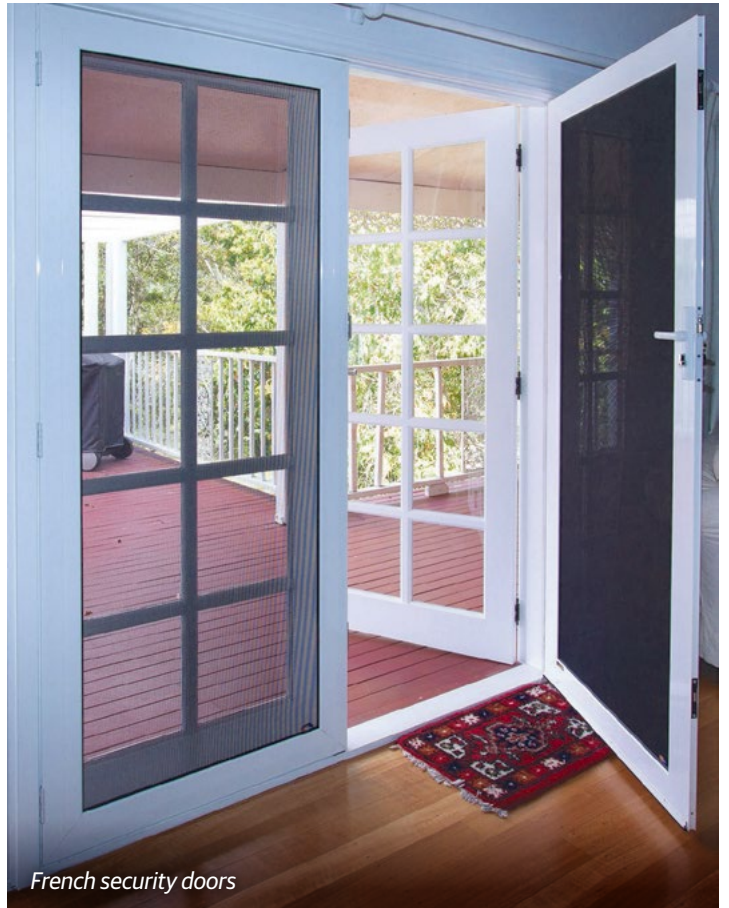
Bi-fold doors



Secure patio and outdoor enclosures with floor to ceiling panels



Hinged door, contemporary style



French security doors



Pool fencing and outdoor enclosures





If it's not Crimsafe, it's not 'crim safe'!

Crimsafe has many imitators. Only Crimsafe Authorised Licensees can supply and install genuine Crimsafe products.

We are often contacted by people who think they have a Crimsafe door, only to discover it is not a genuine Crimsafe product at all.

Don't be fooled by imitation products. There is no 'Crimsafe-equivalent'.

Crimsafe Security Systems Pty Ltd

Toll Free: 1800 274 672

Email: info@crimsafe.com.au

crimsafe.com.au



Crimsafe proudly partners with:

