

LUXAFLEX®
Luminette® PRIVACY SHEERS



SIMPLY **SMARTER** BY DESIGN



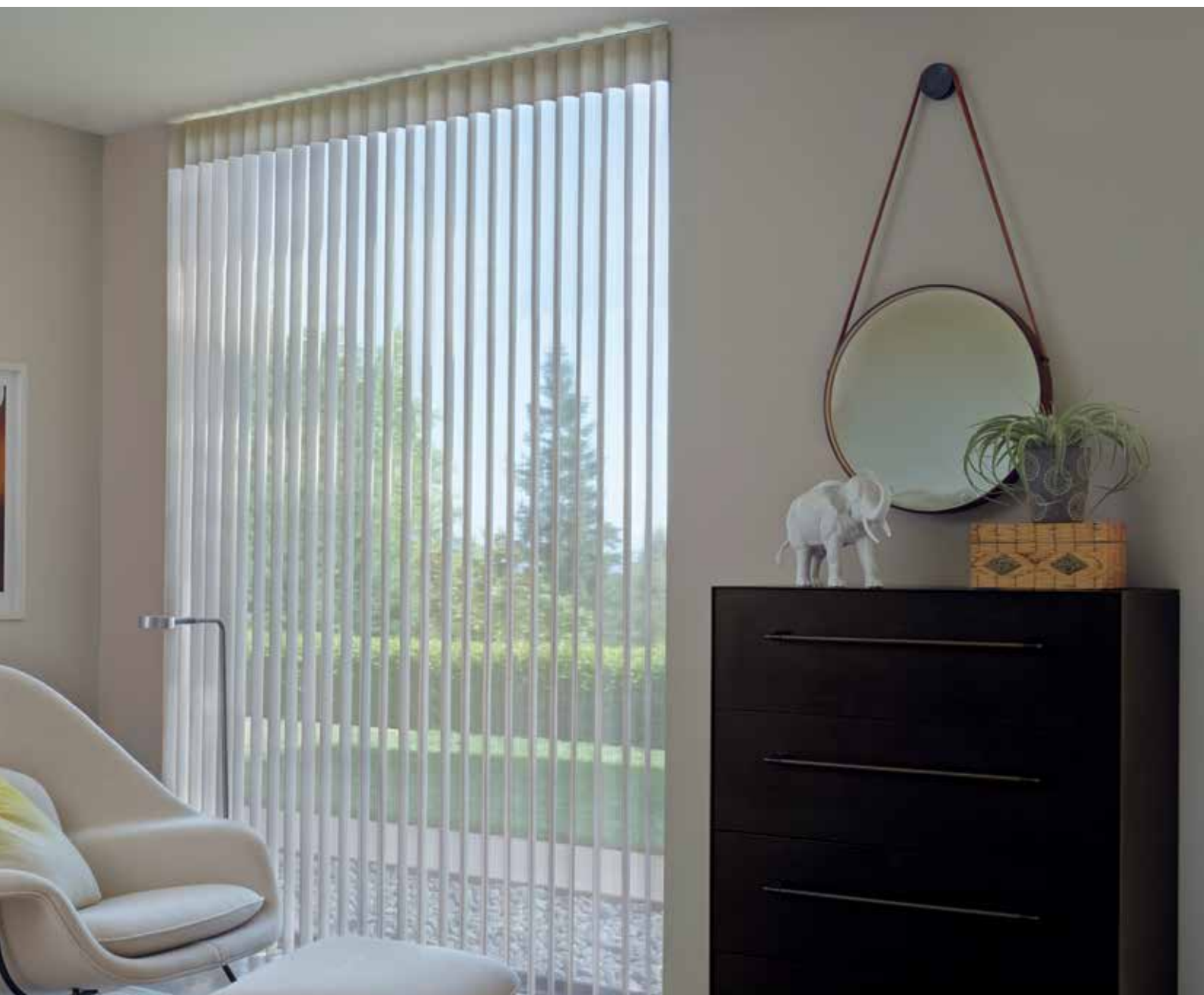


LUXAFLEX® *Luminette*® Privacy Sheers

CLEARLY APPEALING

LUXAFLEX® LUMINETTE® Privacy Sheers offer an inspired, elegant alternative to the traditional curtain with its innovative design.

Luminette Privacy Sheers are a patented window covering providing a unique take on light and privacy control. The sheer fabric face diffuses light coming into the house and soft fabric vanes rotate for privacy and light control. Perfect for large windows and sliding glass doors.



Luminette® Privacy Sheers ***Fabric Options***

With Luxaflex Luminette Privacy Sheers, there's the choice of eight exceptional fabric ranges...one to enhance every room. All fabric ranges are available in translucent and room darkening options. Tonal backing is available on select colours to provide uniformity inside and outside the home.



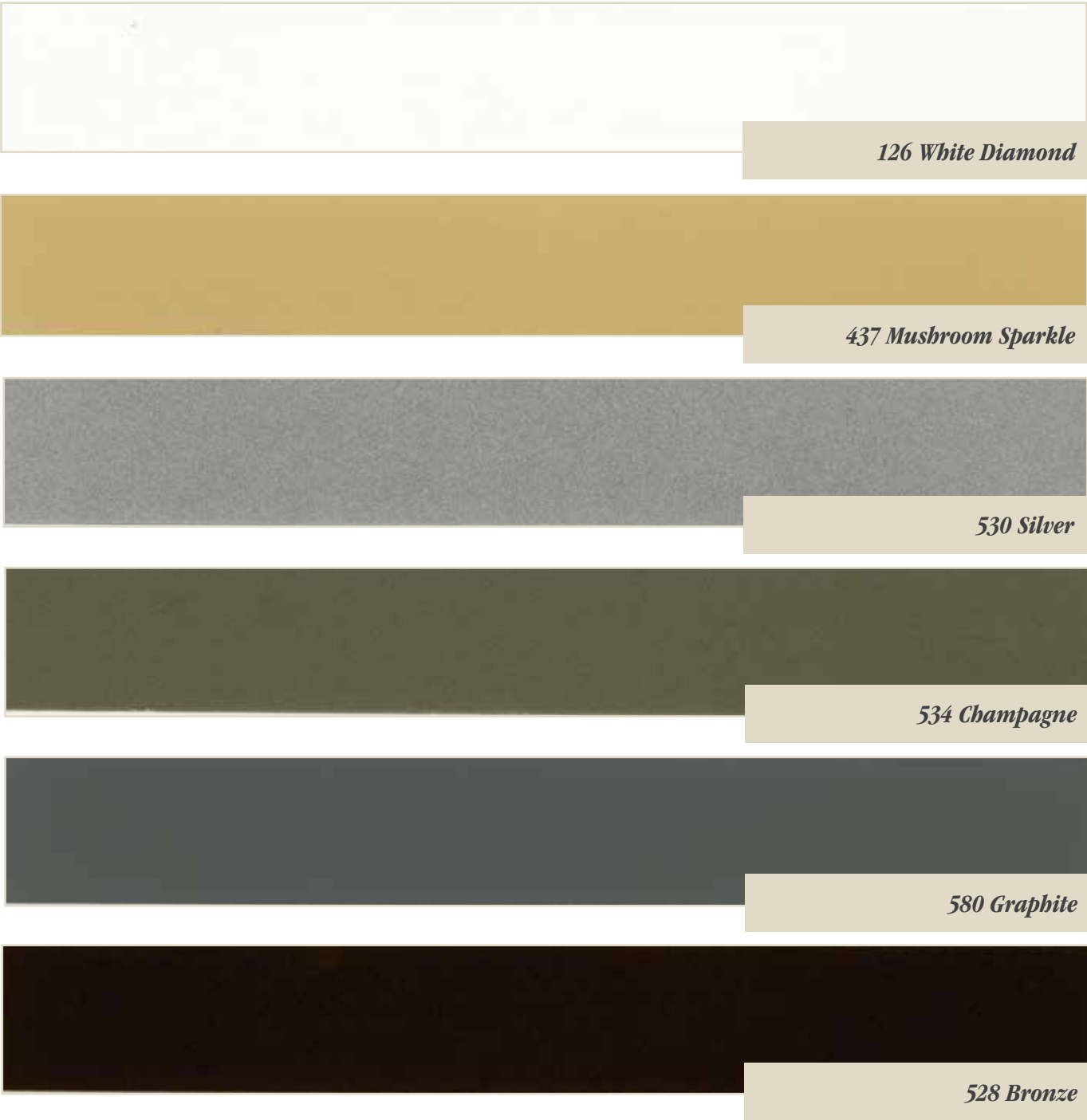
Luminette® Privacy Sheers ***Fabric Options***



Luminette® Privacy Sheers *Hardware Colours*

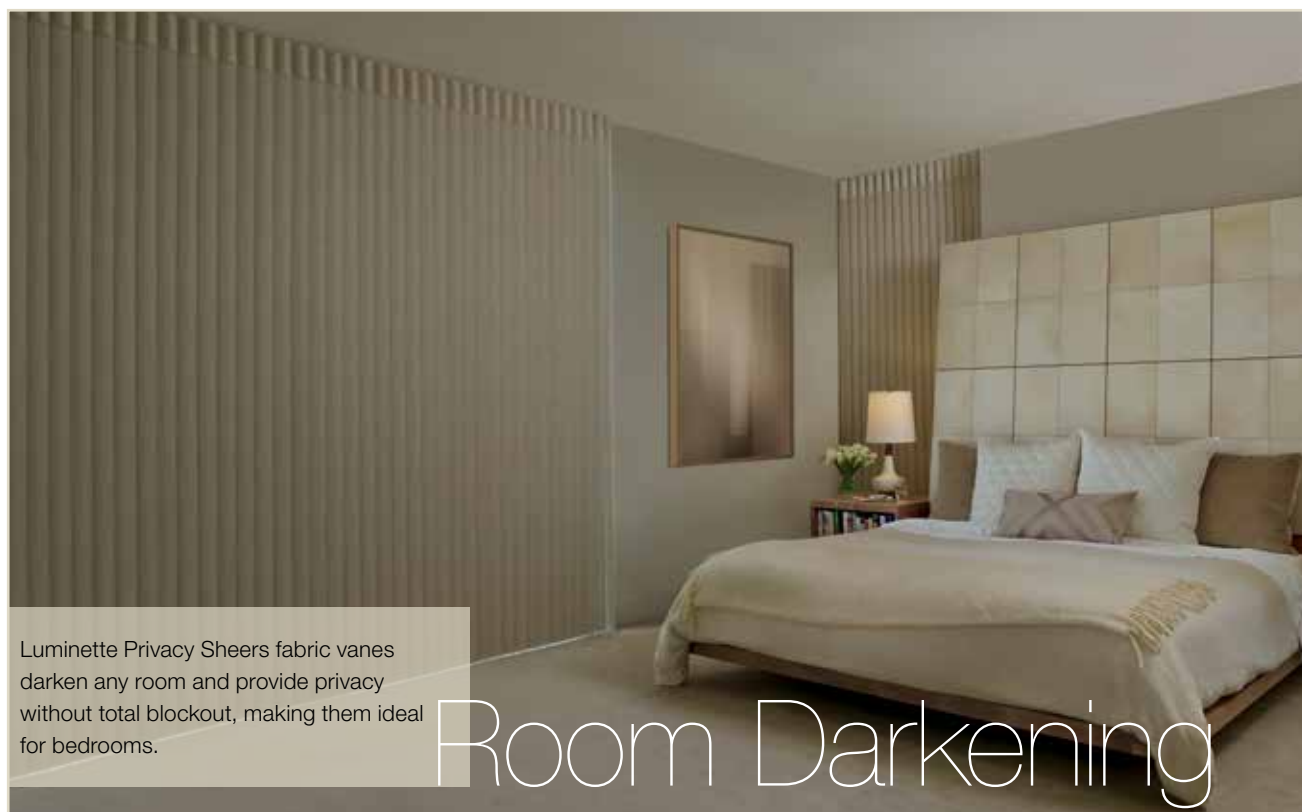
The exclusive SOFTTRAK® Scissor Hardware System provides incredibly smooth and reliable operation. The header conceals the patented operating system as the Luminette Privacy Sheers traverse along the sleek, low profile headrail.

With 6 on-trend hardware colours to coordinate with the wide variety of Luminette fabric colours. This provides the perfect finish that enhances the overall look of your Luminette Privacy Sheers.



(Printing colours will vary. Refer to hardware colours in sample Collection Book)

Luminette® Privacy Sheers *Opacity*



Luminette® *Colours to*

Luminette Privacy Sheers are available in a collection of fabrics in a variety of on-trend colours. Ranging from neutrals to subtle tones, to soft greige and grey tones blending perfectly into their surroundings, providing soft accents for any decor.

Colour is a universal language.



Dreamer

The colour tones of Dreamer make the all white palette the perfect choice for refined spaces. White in different shades creates a pure and timeless look.



Serendipity

This is a sultry colour palette of peachy and pinkish tones to autumn leaf browns. Essentially this is a calming and tranquil palette strong on hue but pure in feel, creating a renewed classical look.

Inspire



Bring an outside mood into your home by borrowing mother nature's colour palette. Create your own mood through an ancient colour with a rich look and eternal charm. All tones are powerful, sophisticated and elegant.

Mood



Soft, gentle grey tones is inspired by the Parisian nights and painted furniture found in elegant French châteaux. Like Paris itself, the colour palette is bold and modern, offering surfaces in shades that exude Euro-chic designer look.

Parisian

Luminette® Privacy Sheers *Operating Systems*

You decide between the safety-minded wand/cord combination, Travelling Wand or motorised Platinum Technology with its sleek, single-touch remote.



COMBINATION WAND / CORD

Combine the tilt and traverse functions into one control, the combination wand/cord system makes opening, closing and rotating the vanes quick and easy.

- Pull cord to traverse sheer.
- Twist wand to rotate vanes.
- Sheer stacks on the same side as wand/cord.



TRAVELLING WAND

Perfect for sliding glass doors, the Travelling Wand system is a simple solution for easy, one-handed access. Simply push or pull the wand to traverse the product and twist to rotate the vanes.

- Perfect for sliding glass doors.
- Push or pull wand to traverse sheer.
- Twist wand to rotate vanes.
- Sheer stacks on opposite side of wand.



POWerview WITH PLATINUM TECHNOLOGY

Thanks to its wireless technology, PowerView controls incoming light and energy usage throughout the home with the simple press of a button.

- Perfect solution for large or hard-to-reach windows and doors.
- No cords for enhanced child and pet safety.
- Battery powered remote control easily traverses sheer and rotates vanes.

LUXAFLEX® *Luminette*® Privacy Sheers

THE PERFECT COMPLEMENT

Luxaflex Luminette Privacy Sheers provide the solution for doorways or large floor-to-ceiling windows, where retracting the shades to the side is required. Complement the Luminette Privacy Sheers by using different types of window shades on the other windows in the same room with either Silhouette or Pirouette Shadings.

Complementing tones of white, beige and cream in various opacities from sheer, translucent to room darkening create a unique look that is both functional yet extremely stylish.

Be inspired by the choice of mix and match options to operate the shade, control the light and insulation requirements and create the mood of each room. The Softshades range makes selection simple; it's the solution to create balance and harmony throughout the entire house.



Luminette® Privacy Sheers *Features & Benefits*



LIGHT & PRIVACY CONTROL

Soft fabric vanes attached to sheer facings rotate between the open and closed positions to achieve any level of illumination desired. Open, this beautiful window fashion stacks cleanly in minimal space, assuring your favourite views remain unobstructed. Closed, the vanes assure privacy and the ultimate in light control add the extra benefit of UV protection. For rooms decorated with upholstered furniture and artwork, Luminette Privacy Sheers provide 99% UV protection without sacrificing design.

BEAUTY IN THE DETAILS

Luminette Privacy Sheers are so versatile they can enhance the character of any decor. A variety of elegant fabrics and classic colours combine to create unlimited decorating possibilities from contemporary to formal. Whether it's a French door or an expansive wall of windows, only Luminette Privacy Sheers create stunning looks for any number of rooms.



Luminette® Privacy Sheers *Features & Benefits*



VERSATILITY

Change the mood of any room by choosing Luminette Privacy Sheers. Its sheer curtain like covering has a vertical design, especially suited for larger, rectangular windows or sliding doors. When fully open, enjoy a subdued view of the outdoors. When closed, its sheer fabric vanes give you complete privacy. The distinctive SOFTRAK® Scissor Hardware System allows fabric vanes to rotate, providing 180 degrees of light control.

CHILD SAFETY

Designed with safety in mind, Luxaflex Luminette Privacy Sheers can be operated with either the Combination Wand/Cord, Travelling Wand or Motorised solution to ensure practicality with a neat finish and enhanced child safety.



Luminette® Privacy Sheers *Care & Cleaning*

The fabric and vanes are 100% polyester. They are resilient, anti-static and dust resistant. Periodic cleaning is recommended to help keep Luminette Privacy Sheers looking like new. For all cleaning applications, fabrics should remain hanging to minimize handling, wrinkling or puckering.

IMPORTANT: Disposable gloves should be worn when handling fabrics

CAUTION: Keep all cleaning solutions away from the SOFTTRAK® Headrail System. Never immerse the headrail.

ROUTINE CLEANING

- Use a feather duster for regular light dusting
- For more thorough dust removal, a hand-held vacuum with low suction may be used. When vacuuming, avoid pulling or stretching the fabric.
- Start in the upper left corner and work across the fabric using short horizontal strokes while steadying the fabric with your free hand. Each stroke should be approximately the width of two to three vanes. Do not use long horizontal or vertical strokes, as these actions will crease the fabric. Continue to the bottom of the fabric.

CAUTION: Do not use brush attachments or rigorous vacuuming since either could distort the fabric.

SPOT CLEANING

To reduce the potential for permanent staining, spots should be treated and cleaned as soon as possible with a clothing stain pre-treatment solution.

- Apply the pre-treatment solution to a clean, white cloth.
- Support the fabric from behind using another clean, dry cloth. Clean the spot using a gentle blotting action. Avoid rubbing the fabric since any abrasive action may cause it to distort.
- Let the area air dry.
- After the area is dry, remove excess solution by blotting it with distilled or bottled water applied to another clean cloth.

INJECTION / EXTRACTION METHOD

Professional injection/extraction cleaning injects a heated cleaning solution into the fabric and extracts the dirty solution in the same motion. This process is done at home.

- Vacuum the fabric following the instructions under "Routine Cleaning" prior to the injection/extraction cleaning.
- Have your professional set and maintain their cleaning solution just below steaming.
- Make sure stains are pre-treated to maximize the benefits of cleaning.
- When cleaning the vanes from the back, use a 75mm upholstery tool and start at the centre of the fabric. Clean one vane at a time from top to bottom working out toward the edge of the fabric. Repeat for the other half of the fabric.

IMPORTANT: both sides of each Luminette room-darkening vane need to be cleaned. This is not necessary on Luminette translucent vanes.

- When cleaning the face fabric from the front, close the vanes to the right and use a 100mm upholstery tool. Start in the upper left corner and use short, horizontal strokes (about the width of 3 vanes) to move across the fabric. Clean from the top to the bottom.
- Allow the fabric to dry in the fully traversed position with the vanes opened.
- Steam out any wrinkles.

Luminette® Privacy Sheers *Care & Cleaning*

ULTRASONIC METHOD

Professional ultrasonic cleaning is a process in which the fabric is inserted into a tank of cleaning solution and then subjected to high frequency vibrations. Dirt is loosened from the fabric and carried away in the cleaning solution. This process is done outside the home.

- Ensure the supplier's ultrasonic tank is long enough to accommodate the full length of the fabric without folding the fabric or vanes.
- Ensure the fabric is rolled onto a tube when being transported to and from the home. This reduces the chance of wrinkling and damage.
- Specify water that does not exceed 32 degrees Celsius throughout the process.

CAUTION: if water temperature exceeds 32 degrees Celsius, oxidation may damage the Luminette room darkening vanes.

- Make sure stains are pre-treated to maximize the benefits of cleaning.
- Hang fabrics immediately after cleaning with the vanes open and the loops evenly spaced. Allow the fabric to drip dry completely.

WRINKLE AND CREASE REMOVAL

The steaming methods described below can be used to help minimize hard wrinkles or creases.

HARD METHOD

- Rotate vanes to the fully opened position.
- Apply warm distilled or bottled water to a clean, white cloth.
- Support the fabric from behind using another clean, dry cloth.
- Blot the wrinkle or creased area with the wet cloth.
- Let the area air dry.

STEAM MACHINE METHOD

- Rotate vanes to the fully opened position.
- Steam from the back side of the fabric whenever possible. Set the steamer to its lowest possible setting, not to exceed 100 degrees Celsius.
- The steaming unit should never directly touch the fabric. Hold the wand 50 – 75mm away from the fabric.
- Use slow continuous vertical movements. Begin at the top of the fabric and work your way down.
- Let the area air dry.



© Copyright 2015 Hunter Douglas Limited [ABN 98 009 675 709] ® Registered Trade Marks of Hunter Douglas Limited 09/15



SMARTER BY DESIGN

